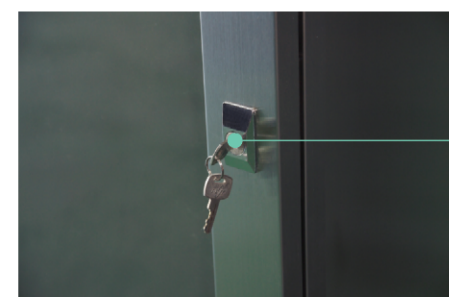




1 hoo;



2 catheter hook



3 Locking device



Gastroscope (ENDOSCOPIC CABINET)

Model	Size (L×D×H / mm)	Remark
KS-ESC-2	700×450×2100	2 Holder
KS-ESC-4	900×450×2100	4 Holder
KS-ESC-6	1200×450×2100	6 Holder

colon endoscope (ENDOSCOPIC CABINET)

Model	Size (L×D×H / mm)	Remark
KS-CSC-2	700×450×2300	2 Holder
KS-CSC-4	900×450×2300	4 Holder
KS-CSC-6	1200×450×2300	6 Holder

Features and Configuration

1. Made of highly corrosive stainless 304 material.
2. To maintain the safety and efficiency of endoscopic storage, it is designed for separate storage.
3. After cleaning, make sure to dry and store
4. Attach a separate fan to adjust the humidity of the interior.
5. Use 5T(Thickness) safety hardening glass to check the internal condition.
6. A locking device on the sliding door to prevent a loss



gastroscopic endoscope rotating field ENDOSCOPIC CABINET(ROTATE TYPE)

Model	Size (L×D×H / mm)	Remark
KS-ESC-R6	700×700×2100	6 Holder
KS-ESC-R8	700×700×2100	8 Holder
KS-ESC-R10	700×700×2100	10 Holder

colon endoscopic rotating field ENDOSCOPIC CABINET(ROTATE TYPE)

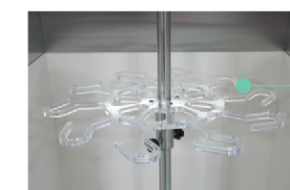
Model	Size (L×D×H / mm)	Remark
KS-CSC-R6	700×700×2220	6 Holder
KS-CSC-R8	700×700×2220	8 Holder
KS-CSC-R10	700×700×2220	10 Holder

Features and Configuration

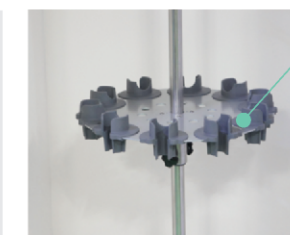
1. Made of highly corrosive stainless 304 material.
2. To maintain the safety and efficiency of endoscopic storage, it is designed for separate storage.
3. After cleaning, make sure to dry and store
4. Attach a separate fan to adjust the humidity of the interior.
5. Use 5T(Thickness) safety hardening glass to check the internal condition.
6. A locking device on the sliding door to prevent a loss



1 Scope Holder



2 Scope Holder (acryl)



3 Scope Holder (AL)

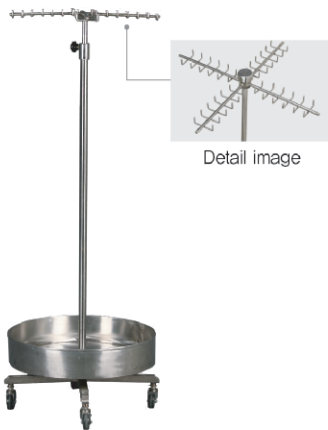




ACCESSORIES STAND

Model	Size (L×D×H / mm)	Remark
KS-AS-02	φ500×1500~2200	—

Revolving accessory hanger stand to store full range of endoscopic accessories such as biopsy forceps and snares instantly to hand. Stainless steel 304 construction for rust proof and non contamination. Height adjustable by knob
2" casters



ACCESSORIES STAND

Model	Size (L×D×H / mm)	Remark
KS-AS-03	φ500×1500×2200	—

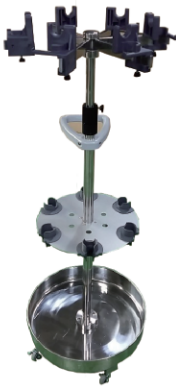
Revolving accessory hanger stand to store full range of endoscopic accessories such as biopsy forceps and snares instantly to hand. Stainless steel 304 construction for rust proof and non contamination. Height adjustable by knob
2" casters



ENDOSCOPIC DRYING RACK STAND

Model	Size (L×D×H / mm)	Remark
KS-EH-4	φ550×1200~1800	4 spheres

Stainless steel 304 pipe frame
Four holder for endoscopic
Height adjustable by knob
ABS plastic handle
Heavy duty ABS base with five legs
Five legs base with 3 inch dual casters



ENDOSCOPIC DRYING RACK STAND

Model	Size (L×D×H / mm)	Remark
KS-EH-6	φ630×1200~1900	6 spheres
KS-EH-8	φ630×1200~1900	8 Spheres
KS-EH-10	φ630×1200~1900	10 District

Stainless steel 304 pipe frame
Height adjustable by knob
ABS plastic handle
2" casters



ENDOSCOPIC DRYING RACK (WOOD)

Model	Size (L×D×H / mm)	Remark
KS-EH-W1	75×93×103	U Type

- Plastic
- Exclude tightening bolts when attaching alone



ENDOSCOPIC DRYING RACK (WOOD)

Model	Size (L×D×H / mm)	Remark
KS-NEH-W1	120×40×40	R Type

- Plastic (Holder) + Steel (Bracket)
- Cannot attach R Type Holder alone



ENDOSCOPIC DRYING RACK (WOOD)

Model	Size (L×D×H / mm)	Remark
KS-EH-W2	W=380	2 Holder

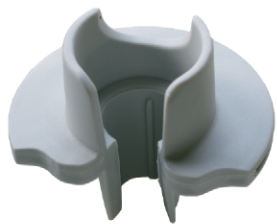
- Interval is the basic size.
- You can make the size according to your requirements.
- Bar : Aluminium



ENDOSCOPIC DRYING RACK (WOOD)

Model	Size (L×D×H / mm)	Remark
KS-EH-W3	W=710	3 Holder

- Interval is the basic size.
- You can make the size according to your requirements.
- Bar : Aluminium



ENPOSCOPIC LENS SAFER

Model	Size (L×D×H / mm)	Remark
KS-SH-1	Φ25~20	—

Endoscope Lens Safer
Rubber (Holder)
For U or R type endoscopic



ENPOSCOPIC LENS SAFER

Model	Size (L×D×H / mm)	Remark
KS-SH-S2	W=245	—

Endoscope Lens Safer Bracket 2 Holder
Rubber (Holder) + Steel (Bracket)
For U or R type endoscopic



ENPOSCOPIC LENS SAFER

Model	Size (L×D×H / mm)	Remark
KS-SH-S1	W=100	—

Endoscope Lens Safer Bracket/Holder
Rubber (Holder) + Steel (Bracket)
For U or R type endoscopic



APRON STORAGE RACK

Model	Size (L×D×H / mm)	Remark
KS-ASR	500×500×1450	10 Holder

Ø 10 pie bar stainless steel 304 construction
10 holders and can be spread left and right
Four 3 inch casters





OPERATING STOOL

Model	Size (L×D×H / mm)	Remark
KS-271050	370×460×880~960	진찰용 A형

Artificial leather seat with back rest
Rotating round seat
Height adjustable by gas cylinder
(Operated by Hand lever)
Chrome nickeled base
Four 2 inch twin wheel casters



OPERATING STOOL

Model	Size (L×D×H / mm)	Remark
KS-263330	φ370×510~700	진찰용 B형

Artificial leather seat
Rotating round seat
Height adjustable by gas cylinder
(Operated by Hand lever)
Chrome nickeled base with round foot rest
Four 2 inch twin wheel casters



OPERATING STOOL

Model	Size (L×D×H / mm)	Remark
KS-262540	380×440×770~950	진찰용 D형

Artificial leather seat with back rest
Rotating round seat
Height adjustable by gas cylinder
(Operated by Hand lever)
Chrome nickeled base with round foot rest
Four 2 inch twin wheel casters



OPERATING STOOL

Model	Size (L×D×H / mm)	Remark
KS-270050	380×440×770~950	진찰용 D형(오리발)

Artificial leather seat with back rest
Rotating round seat
Height adjustable by gas cylinder
(Operated by Hand lever)
Chrome nickeled base with round foot rest
Five 2 inch twin wheel casters

OPTIONS 고정식



OPERATING STOOL

Model	Size (L×D×H / mm)	Remark
KS-264820	φ370×510~760	진찰용 C형,이동식
KS-264820C	φ370×510~760	진찰용 C형,고정식

Artificial leather seat
Rotating round seat
Height adjustable by gas cylinder
(Operated by Hand lever)
Chrome nickeled base
Four 2 inch twin wheel casters

OPERATING STOOL

Model	Size (L×D×H / mm)	Remark
KS-267850	370×545×780~900	진찰용 O형

Artificial leather seat with back rest
Rotating round seat
Height adjustable by gas cylinder
(Operated by Hand lever)
Chrome nickeled base with round foot rest
Four 2 inch twin wheel casters



OPERATING STOOL

Model	Size (L×D×H / mm)	Remark
KS-DR-400	610×550×900~1170	제도용

Artificial leather seat with back rest
Rotating round seat with arm rest
Height adjustable by gas cylinder
(Operated by Hand lever)
Chrome nickeled base with round foot rest
Four 2 inch twin wheel casters



OPERATING STOOL(Balleo-s)

Model	Size (L×D×H / mm)	Remark
KS-BLOS	390×740×480~600	-

Artificial leather seat with back rest
Rotating round seat with arm rest
Height adjustable by hydraulic
(Operated by Foot pedal)
Five 2 inch twin wheel casters
AL die casting base