

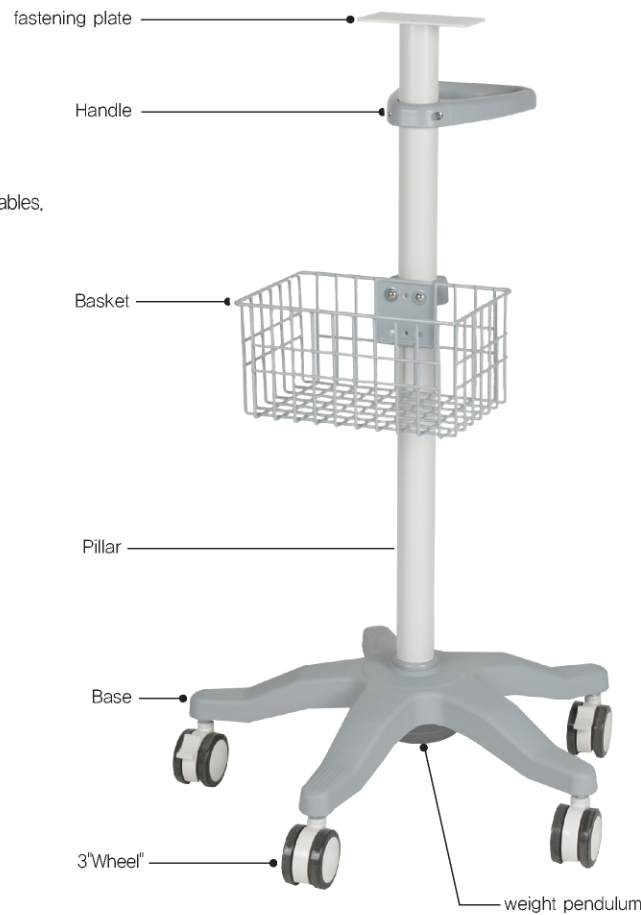
Monitor cart

This is a cart for patient-monitoring devices. It can be applied to almost any brand. Basically, the shape is the same, and you can change the part. The fixing plates connected to the fastener plate are fabricated for each equipment and attached to the bolts. Built-in for transportation and storage of consumables. It is faithful to the basics that require transportation and storage of consumables. Parts can be disassembled for storage, logistics, and assembly.

Air Hanger



Model	Size (L×D×H / mm)	Remark
KS-AIR-H		Φ 14



Monitor cart(Fixed)

Model	Size (L×D×H / mm)	Remark
KS-MCB-01	Φ 630×1050	—

It's a height fixed model. The basket and handle consist of the same assembly, with a fastening plate attached to the top to attach a suitable fixture plate. The monitor fixture plate is bolted together with the fastener.



Monitor cart (Sliding)

Model	Size (L×D×H / mm)	Remark
KS-MCB-02	Φ 630×1050	—

It's a height fixed model. The basket and handle consist of the same assembly, with the mounting plate on the top which can be secured by sliding the fixing plate made for the monitor. The monitor fixture plate is inserted into the mounting plate and secured with pins. The mount plate area can be tilted slightly.



A ventilator cart

Configuration model for ventilators. A base of 550 mm in diameter for compacting; 120mm in diameter, plus stability. Dedicated bracket for attaching the humidifier. Wire basket for storage of various consumables. 220V Multi-tab with two electronic devices. Handles for easy movement are applied. The fastening plates are connected together with the fixing plates so that different models can be applied.



가습기 거치를 위한 전용 브라켓 (호환 여부는 사전 협의요망)

콘센트를 하나로 통합하기 위한 멀티 탭 (220V-선택사양)

A ventilator cart

Model	Size (L×D×H / mm)	Remark
KS-VL-01	Φ 550×880	—



monitor cart (fixed+top-up)

Model	Size (L×D×H / mm)	Remark
KS-MCB-03	Φ 630×1100~1900	—

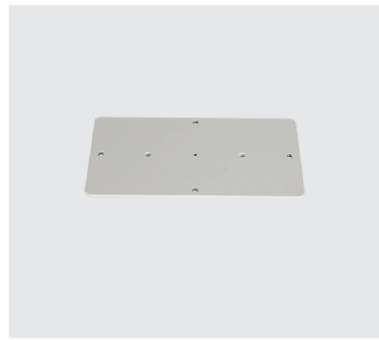
It's a height-moving model. It is possible to adjust the top and bottom manually. The basket and handle consist of the same assembly, with a fastening plate attached to the top that allows for the attachment of a fixed plate made to fit the monitor. The monitor fixture plate is bolted together with the fastener.



monitor cart (slide+up/down height)

Model	Size (L×D×H / mm)	Remark
KS-MCB-04	Φ 630×1100~1900	—

It's a height-moving model. It is possible to adjust the top and bottom manually. At the top, there is a mounting plate that can be secured by sliding the fastening plate into place, which is designed for the monitor. The monitor fixture plate is inserted into the mounting plate and secured with pins. The mount plate area can be tilted slightly.



a fastening plate(Fixed)

Fixed to the top of the column, Connect the equipment fixture plate to the fastener plate for use.



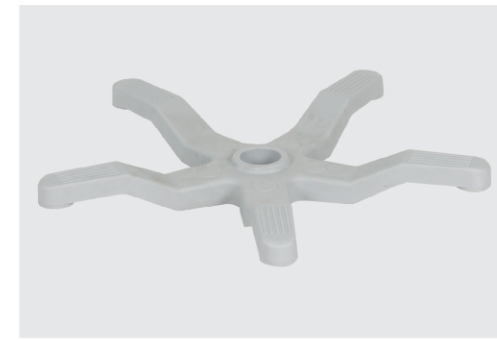
Equipment fixed plate (fixed)

The equipment fixture plate is built differently depending on the position of the fixed holes on the monitor.



Equipment fixed plate (slide)

The equipment fixed plate can vary depending on the characteristics of the monitor. It is inserted in the fastening plate. Produce them in consideration of the presence of supports at the bottom.



01 ABS-S

Suitable for small and light use. It's a little lower in center than the other bases.

Model	Size (L×D×H / mm)	Remark
KS-ABS-S	φ 550	A,B,S Plastic



02 ABS-L

Basically, it has weight and is used in a variety of ways. The center is slightly higher than the other bases.

Model	Size (L×D×H / mm)	Remark
KS-ABS-L	φ 630	A,B,S Plastic



A fastening plate(Slide)

Mounting plates can be inserted left and right. Fix the equipment attachment plate with the pin. The mounting plate supports a little tilting (angle control).



Insert Sliding

Equipment fixed plates are made by sliding way.



Pin fixation Way

The sliding equipment fixed plate is pin-fixed.



03 AL-S

Aluminium materials are resistant to impact. You can change the color by Powder Coating.

Model	Size (L×D×H / mm)	Remark
KS-AL-S	φ 550	Aluminium



04 AL-L

Aluminium materials are resistant to impact. You can change the color by Powder Coating.

Model	Size (L×D×H / mm)	Remark
KS-AL-L	φ 700	Aluminium



High-low control bracket

In case of model with adjustable height, You can rotate the handle to determine its height, lock it, and then fix it with a bolt attached to the side.



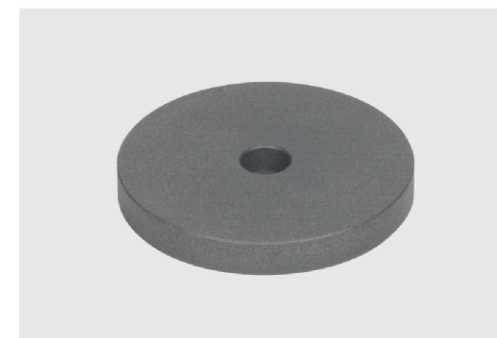
Handle

Handles that make the move easier can be removed or attached by the user depending on the situation.



Separation type column

Depending on the user's movement and logistics method, columns can be removed and moved. Production methods need to be discussed in advance.



05 Weight Pendulum

After the cart is constructed, you can apply weights to the lower center. Apply to maintain a stable posture

Model	Size (L×D×H / mm)	Remark
KS-AC-CH120	φ 120	1.7kg
KS-AC-CH150	φ 150	2.6kg
KS-AC-CH200	φ 200	5kg
KS-AC-CH250	φ 250	10.5kg



06 Weight Pendulum

The weight pendulum is attached to the bottom of the base by tightening the bolts.